



MASCOT

Respect, Responsibility, Aroha, Self-discipline, Honesty

Phone: 07 862 8602 Absentee Messages: 027 952 3203

10th March 2022

From the Board:

It is with heartfelt sadness that we announce the resignation of our Miller Avenue School Principal Matua Richard Wilkinson.

Richard has been successful in securing a post as Deputy Principal at Kaitia Abundant Life School for years 1- 10 and Assistant Principal Secondary.

Richard and his whanau are fulfilling a lifelong wish to return to their whenua and extended Whanau in Northland. This has been an exciting opportunity made available for them to make this move. The board would like to sincerely congratulate Matua on his successful appointment.

Richard has made an incredible difference to our school and community over the past 18 months, creating success and embracing well-being for all our school community, staff and tamariki. Matua's influence has been far reaching and immeasurable and it will be very big shoes that will be left to fill.

Richard will be finishing with us at the end of term one on Thursday 14th April, please watch this space in regards to our final assembly and plans to give Richard the celebration and send off from our community that he has earned and deserves.

The board would like to announce the appointment of Deputy Principal Mr Phil Gurnick into the Acting Principal role while the Board follow the formal recruitment process into for the permanent position of Principal. Phil is well known to our school community and lead us well during lock down in 2020, I'm sure you will all join the board in supporting him during this challenging time for our community, our staff and our tamariki.

Nga mihi nui haere pai e hoa

Janine Appleby

Presiding Member

COMING EVENTS

March—Poutūterangi

11th Values Assembly—2.30 pm

April—Paengawhāwhā

14th Teacher Only Day—No School this day
End of Term 1—School Holidays

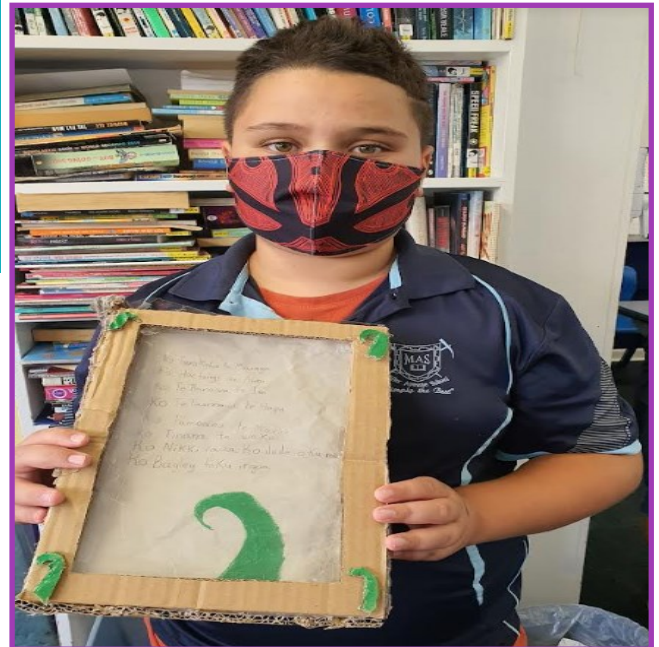
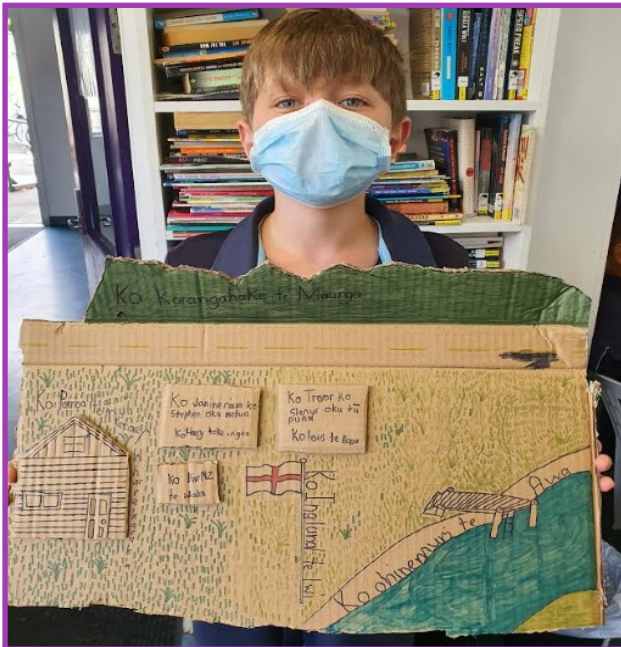
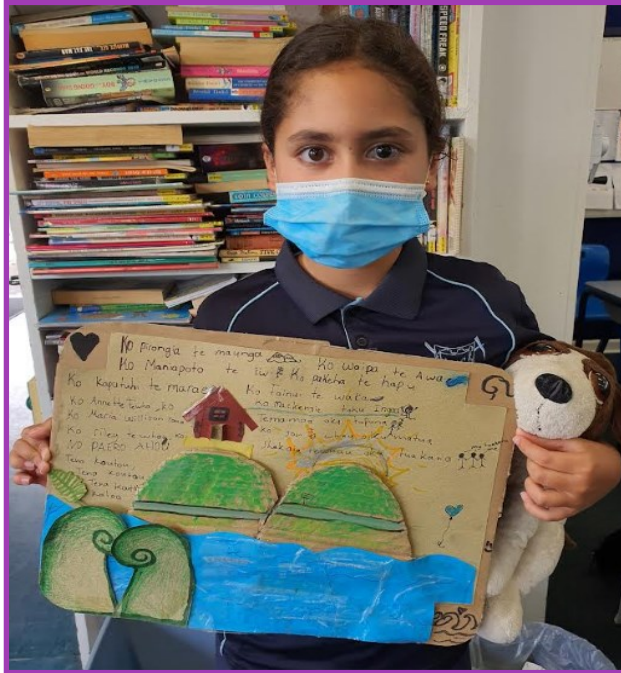
Weetbix and milk
is available in
each classroom
for any students
wanting breakfast
between 8.30am
and 8.50am each
school day
morning.



Miller Avenue School—Creating brighter futures, together.

Room 5— “About Me”

Room 5 akonga have been working hard on different ways of telling 'About Me'. One of these projects has been making a visual representation of their pepeha. Here, we have student's work of how they have chosen to represent their pepeha. Whilst continuity of lessons has been hard with the realities of covid in our community, it has been so rewarding to see the students put so much care into their art work. Well done. Fabulous results.



MY PEPEHA

Miller Avenue School Contact Information

E-mail: office@millerave.school.nz

Website: www.millerave.school.nz

Bank Account: 03-1572-0010292-00 (please put in payment details and your child's name) Westpac

Miller Avenue School—Creating brighter futures, together.

CONGRATULATIONS

To our 2022 House Leaders...

Kauri: Awatere & Azaeliyah

Kowhai: Tiana & Daniel

Rimu: Ameliah & Manaia

Totara: Kororia & Jack

Congratulations to these 8 students stepping up to support their peers.

Kia ora tatou katoa whānau

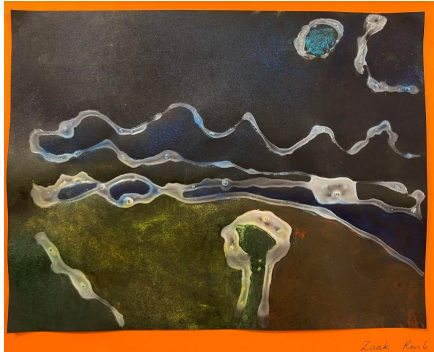
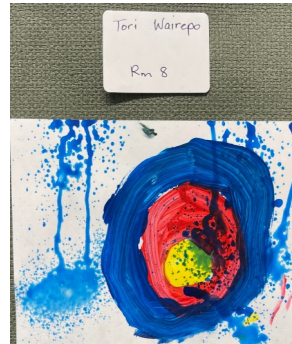
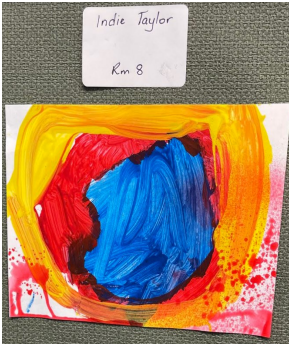
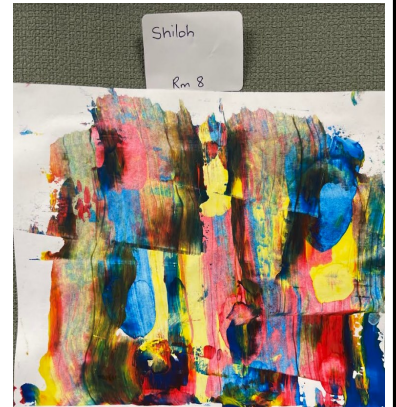
Check out the creative work below from our young MAS budding artists.

It's all about our tamariki this week – NOT Covid

Thank you for your ongoing support.

Ngā Manākitanga

Richard Craig Wilkinson – MAS Principal.



Chalk Pastel Landscapes

L1: Students will explore elements of art including line, colour, shading, blending and mark making.



PUBLIC NOTICES



Spring bulb SALE

**HUGE SAVINGS
FREE DELIVERY**

Help us reach our target of \$6,000 to upgrade our outdoor play equipment.

Purchase with confidence from GardenPost who source New Zealand and Holland's top bulbs!

Email: paeroa@playcentre.org.nz for an order form and payment instructions.

Playcentre

Whānau tupu ngātahi - families growing together



NEXT CHAPTER PARENTING

Offering
The **PARENT SURVIVAL KIT**

PARENTING COURSE

- Do you find yourself yelling at your child more often than laughing with your child
- Do you feel you have lost touch with your child
- Do you feel frustrated and find yourself saying the same things over and over again with no result

TOPICS COVERED

COMMUNICATION	CHOICES/CONSEQUENCES	COMPLIANCE
EMPATHY	SIBLING RIVALRY	TEENAGERS AND BOUNDARIES
SETTING LIMITS	PAUSE TIME IN	ARE YOU DOING TOO MUCH
PERSONALITY TYPES	PRaise VS ENCOURAGEMENT	QUALITY TIME

IDEAL FOR GROUPS, INDIVIDUALS OR A BUNCH OF FRIENDS

Via **zoom**

f: NEXT CHAPTER PARENTING
www.nextchapterparenting.co.nz
E: brigid@nextchapterparenting.co.nz
M: 0221087214

WINZ ASSISTANCE WHERE APPLICABLE

OUR NEW SCHOOL APP

Miller Avenue School

Thanks to the below business for sponsoring our school app:



Tamariki Station Early Childhood Education Centre

If you would like to advertise on the Miller Avenue School Skool Loop App please email Content@skoolloop.com



To download our app: In Google Play & App Store search 'Skool Loop' & choose Miller Avenue School once installed.